



PowerOLAP[®]

Installation

PowerOLAP[®] Evaluation Client

Install Guide



Information in this document and in documents associated with other PARIS Technologies Training materials is subject to change without notice, and does not represent a commitment on the part of PARIS Technologies. No part of this manual may be reproduced or transmitted in any form, or by any means whatsoever, without the written permission of PARIS Technologies International, Inc.

© Copyright 2014 PARIS Technologies International, Inc.

Windows is a trademark of the Microsoft Corporation.

Microsoft Excel is a trademark of the Microsoft Development Corporation.



TABLE OF CONTENTS

PowerOLAP [®] Evaluation Client Installation	1
Installing the PowerOLAP [®] Evaluation Client.....	1
Register the PowerOLAP [®] Evaluation Client	6

(This page has been left blank intentionally)

PowerOLAP® Evaluation Client Installation

Before Your Begin, Please Note:

- ❏ The PowerOLAP® application and Microsoft Excel application should be closed before uninstalling/installing.
- ❏ Ensure that you are logged into a profile on your computer that has Administrative privileges.

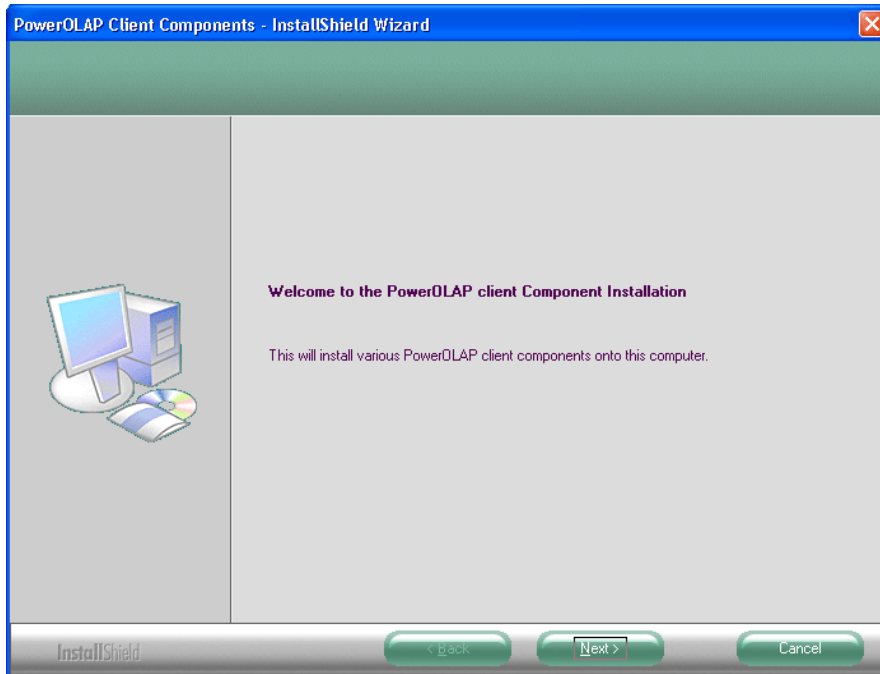
Installing the PowerOLAP® Evaluation Client

To install the PowerOLAP® Evaluation Client:

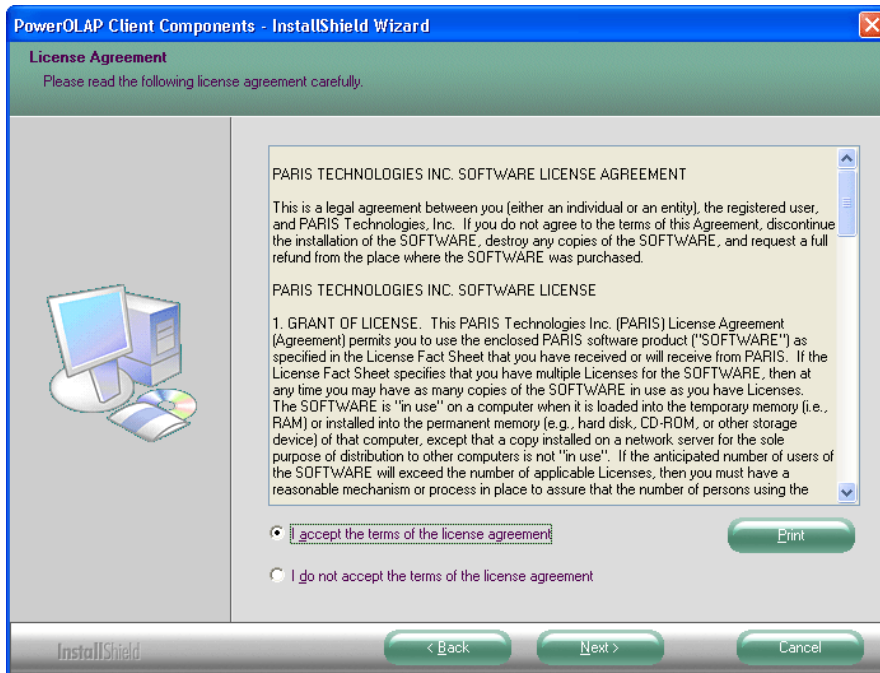
1. Locate the **installation file** for PowerOLAP® and run **setup.exe**.

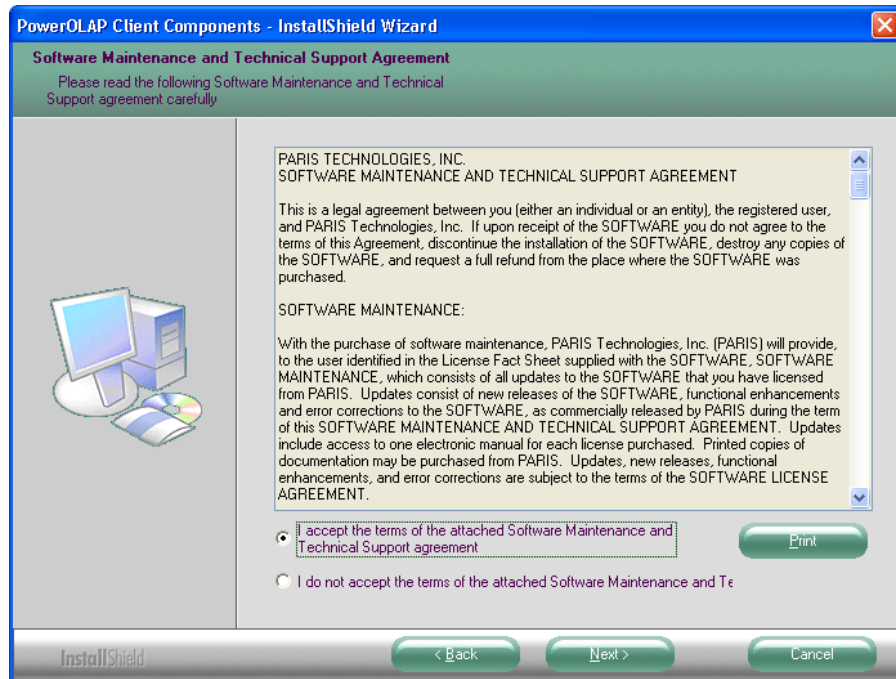


2. Proceed to the **Installation Welcome** screen and click **Next**.



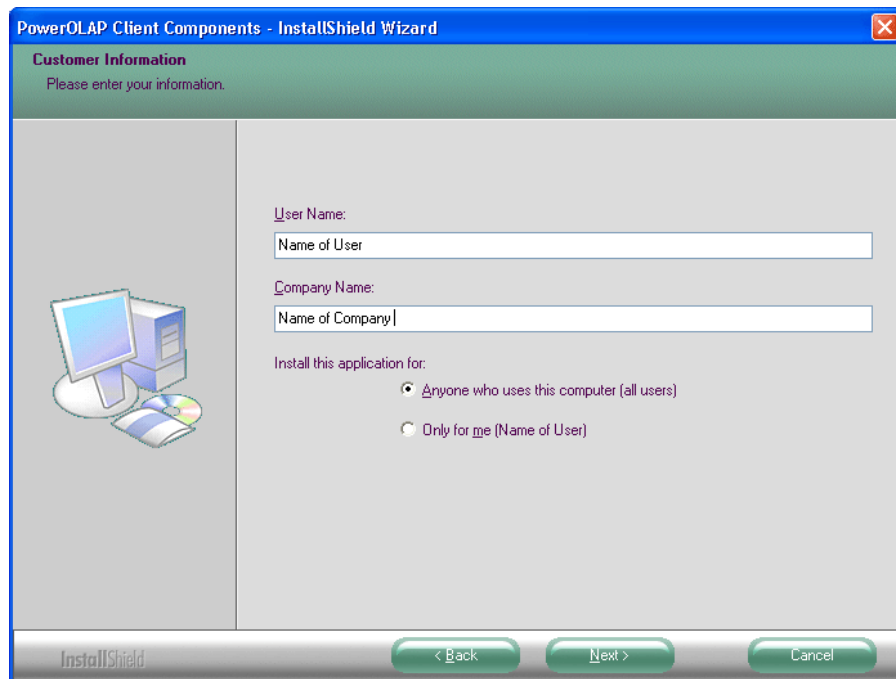
3. Read the **License and Maintenance Agreement** screens and select **I accept**.



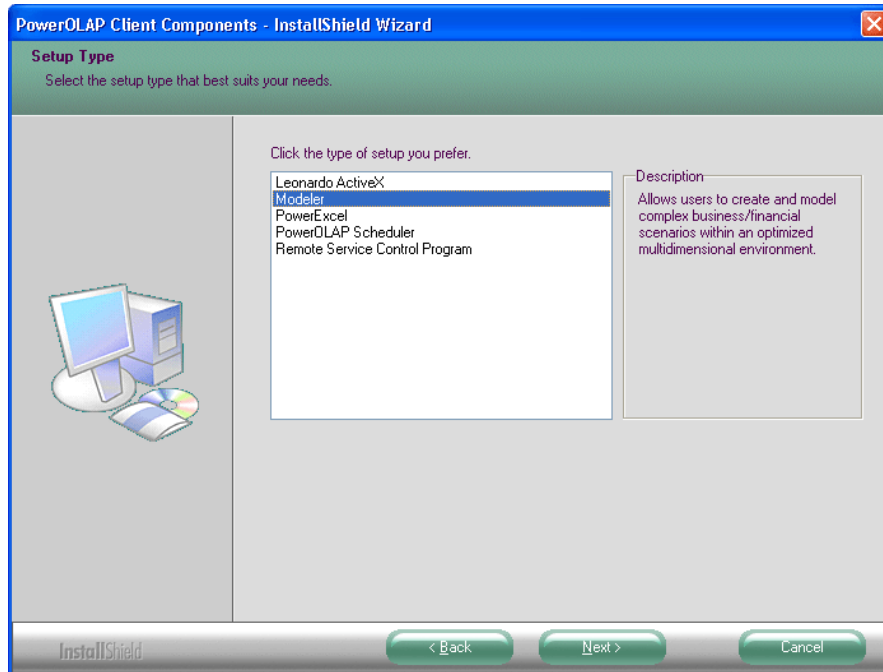


4. Click **Next**.
5. In the **Customer Information** screen, enter the appropriate **<User Name>** and **<Company Name>** in the indicated boxes.

NOTE: Take note of the radio button options. Enable whether you want to allow the PowerOLAP application to be accessible by **Anyone** or **Only Me** by ticking the appropriate radio button.

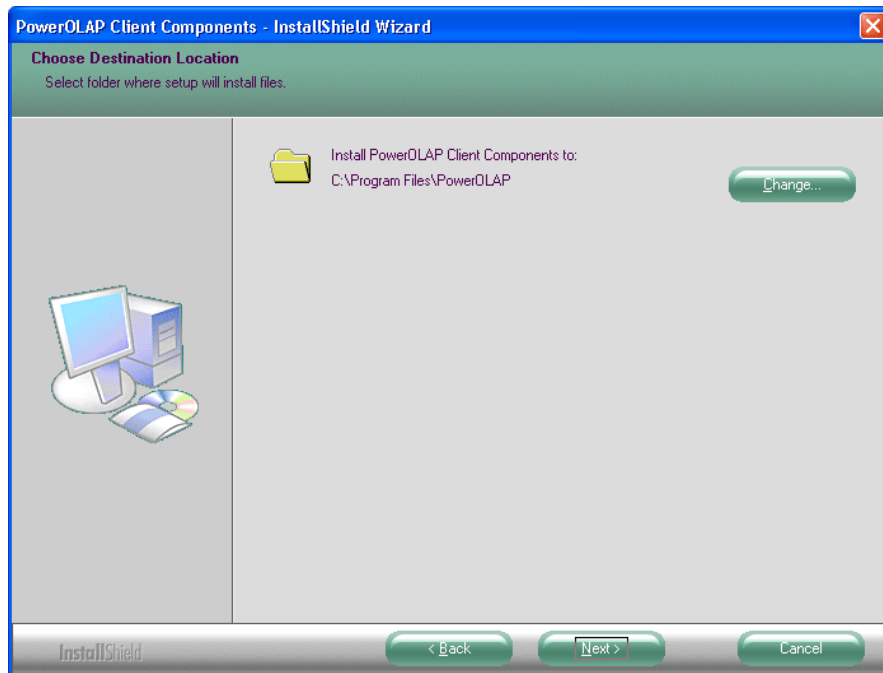


6. Click **Next**.



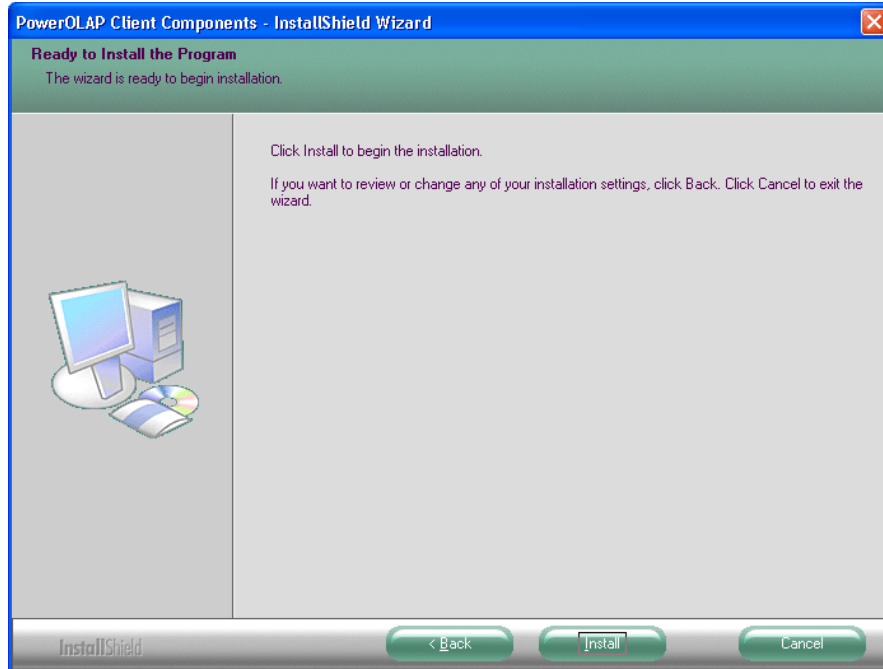
7. In the **Setup Type** screen, select **Modeler**, required for evaluation, then click **Next**.

NOTE: DO NOT install any other components or the Evaluation will not work.



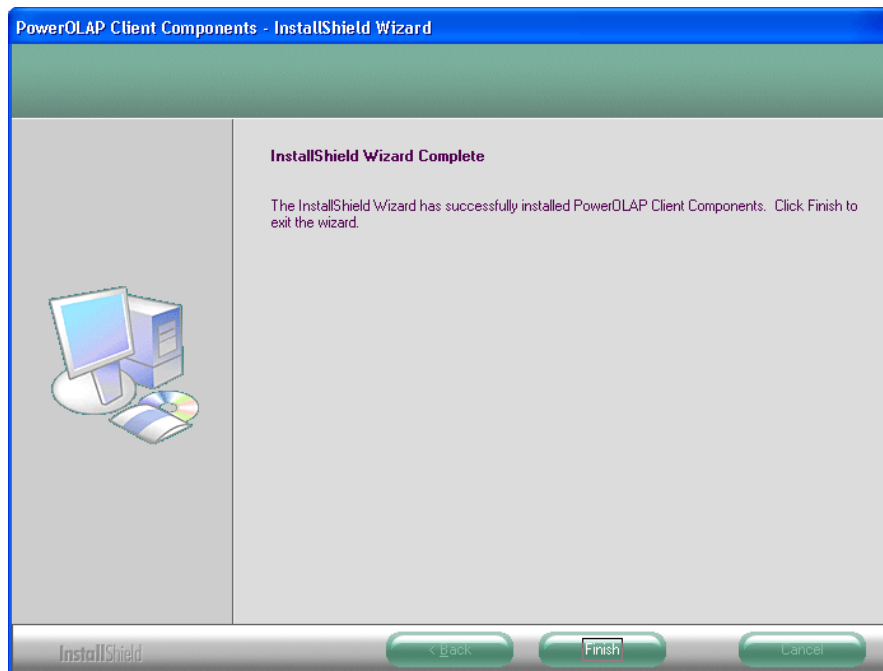
The **Choose Destination Location** screen specifies where the PowerOLAP® Client components will be installed. The default destination folder is *C:\Program Files\PowerOLAP*. You may change the location by clicking on the Change button and then specifying a new path. Otherwise, simply click on the Next button to proceed to next screen.

8. In the **Choose Destination Location** screen, specify the desired destination folder then click **Next**.



9. In the **Ready to Install the Program** screen click **Install** to begin installation process.

NOTE: The PowerOLAP Client Components installation will get underway and may take a few minutes to complete the installation. If the installation is successful, you will be prompted in the last screen that install has completed.



10. Click **Finish** to complete installation.


11. **Restart** the computer.

This completes the Installation. Next step is to register the evaluation.

Register the PowerOLAP® Evaluation Client

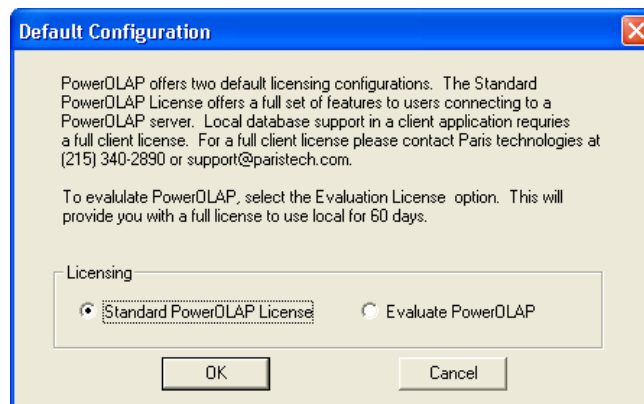
1. Launch PowerOLAP® application by following these steps carefully:
 - Click **Start** button and first find, but DO NOT click on, **PowerOLAP**
 - Right-click on **PowerOLAP** and select **Run as Administrator** option.

The Default Configuration dialog box will be displayed. The first time you launch PowerOLAP® you will be given two options: **Standard** and **Evaluation**.

**Important**

It is very important that the PowerOLAP application be launched with Administrative privileges to avoid running into issues so make sure to follow the steps outlined above.

In the Default Configuration dialog box that appears you will be required to choose the correct radio button to proceed with a full capability Evaluation instance of PowerOLAP®. DO NOT keep the default radio button (which will require PowerOLAP Server connectivity), instead ensure to select **Evaluate PowerOLAP** option.



2. Under the **Licensing** section, select **Evaluate PowerOLAP** option.

The **Evaluation** option will enable a user to operate PowerOLAP® with full functionality for 60 days.

3. Click **OK**.

A Web page that welcomes you to explore PowerOLAP and PARIS products appears next. When you are finished, simply click OK to close the dialog box, and start working with PowerOLAP!

Notes

In the succeeding instances when you launch PowerOLAP, you will see the Default Configuration window, but now the options will be greyed out. This dialog will display information as to the number of days remaining in the 60-day evaluation period.

These full PowerOLAP[®] capabilities are included in the Evaluation License:

- Excel Connectivity
- OLAP Exchange
- Local Database
- Allow Editing
- Enable Security
- Create Formulas
- OLAP Services
- No Cube Limit
- No Dimension Limit
- No Member Limit

If you have any questions or would to purchase PowerOLAP[®], please contact PARIS Technologies at +1-215-340-2890 or info@paristech.com.

(This page has been left blank intentionally)