



PowerOLAP®

Installation

PowerOLAP® Evaluation Client

Install Guide

C o n t e n t s

- PowerOLAP® Evaluation Client Installation



Information in this document and in documents associated with other PARIS Technologies Training materials is subject to change without notice, and does not represent a commitment on the part of PARIS Technologies. No part of this manual may be reproduced or transmitted in any form, or by any means whatsoever, without the written permission of PARIS Technologies International, Inc.

© Copyright 2014 PARIS Technologies International, Inc.

Windows is a trademark of the Microsoft Corporation.

Microsoft Excel is a trademark of the Microsoft Development Corporation.





TABLE OF CONTENTS

<i>PowerOLAP® Evaluation Client Installation</i>	<i>1</i>
Installing the PowerOLAP® Evaluation Client	1
Register the PowerOLAP® Evaluation Client	6

(This page has been left blank intentionally)

PowerOLAP® Evaluation Client Installation

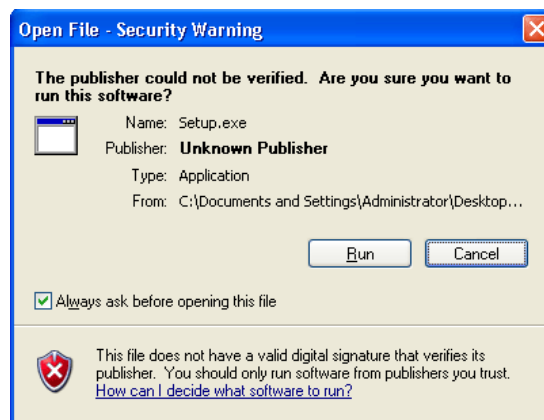
Before Your Begin, Please Note:

- ✦ The PowerOLAP® application and Microsoft Excel application should be closed before uninstalling/installing.
- ✦ Ensure that you are logged into a profile on your computer that has Administrative privileges.

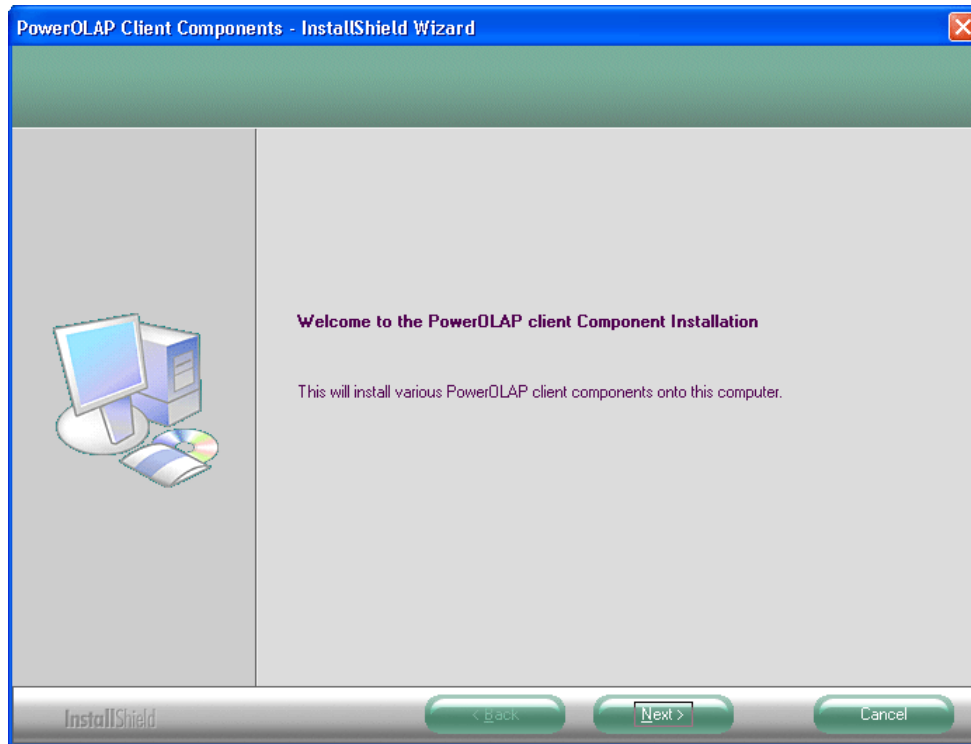
Installing the PowerOLAP® Evaluation Client

To install the PowerOLAP® Evaluation Client:

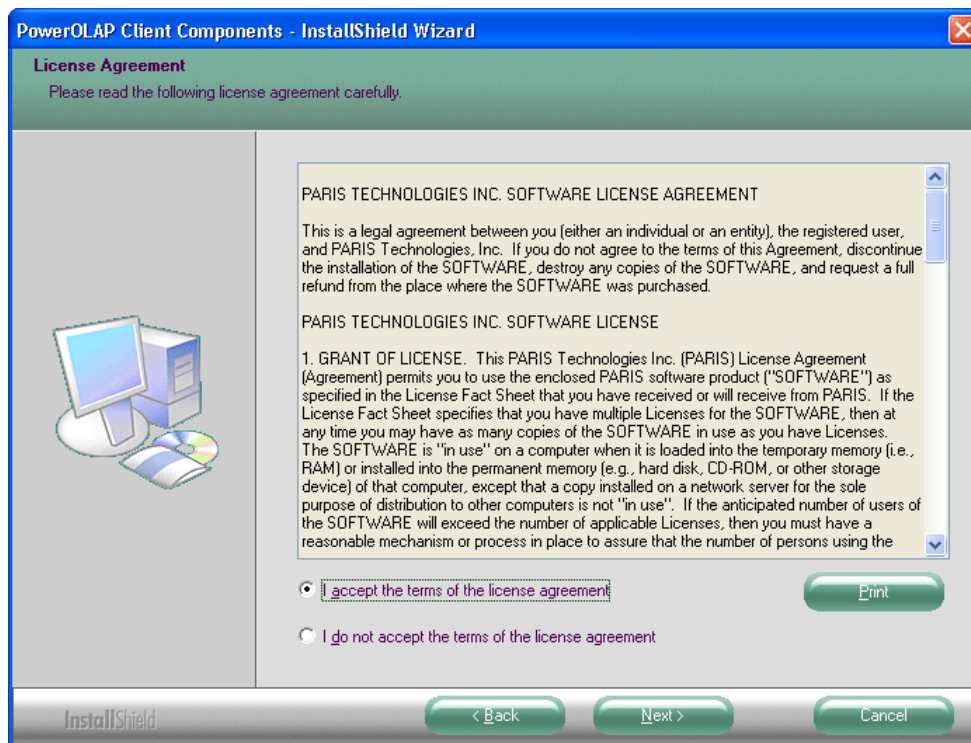
- ▶ Locate the **installation file** for PowerOLAP® and run **setup.exe**.

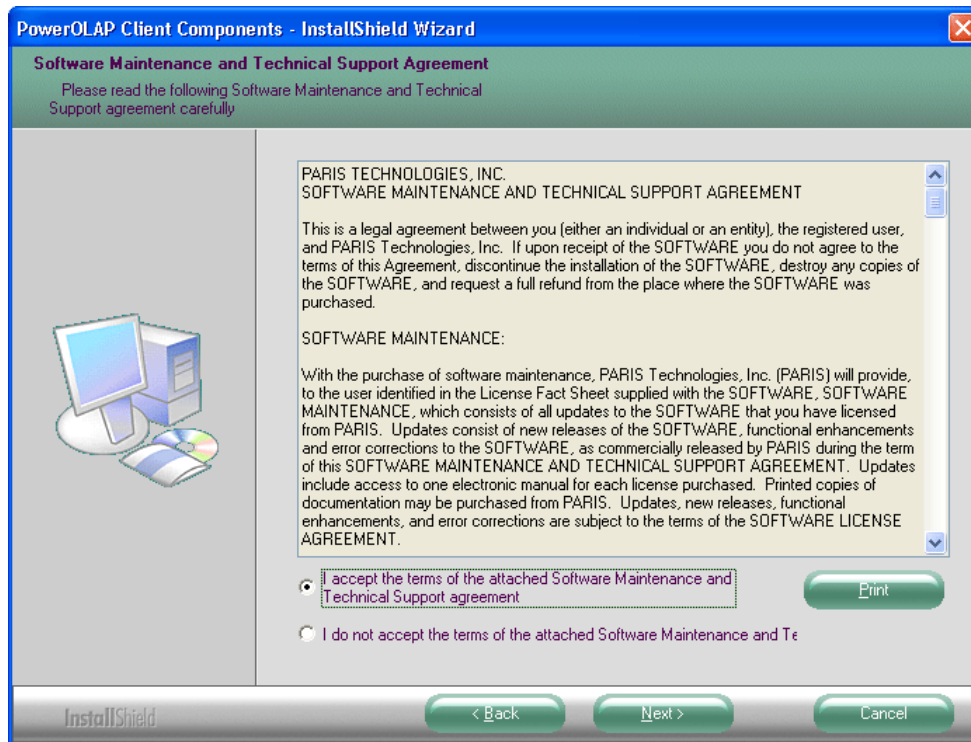


- ▶ Proceed to the **Installation Welcome** Screen and Click **Next**.



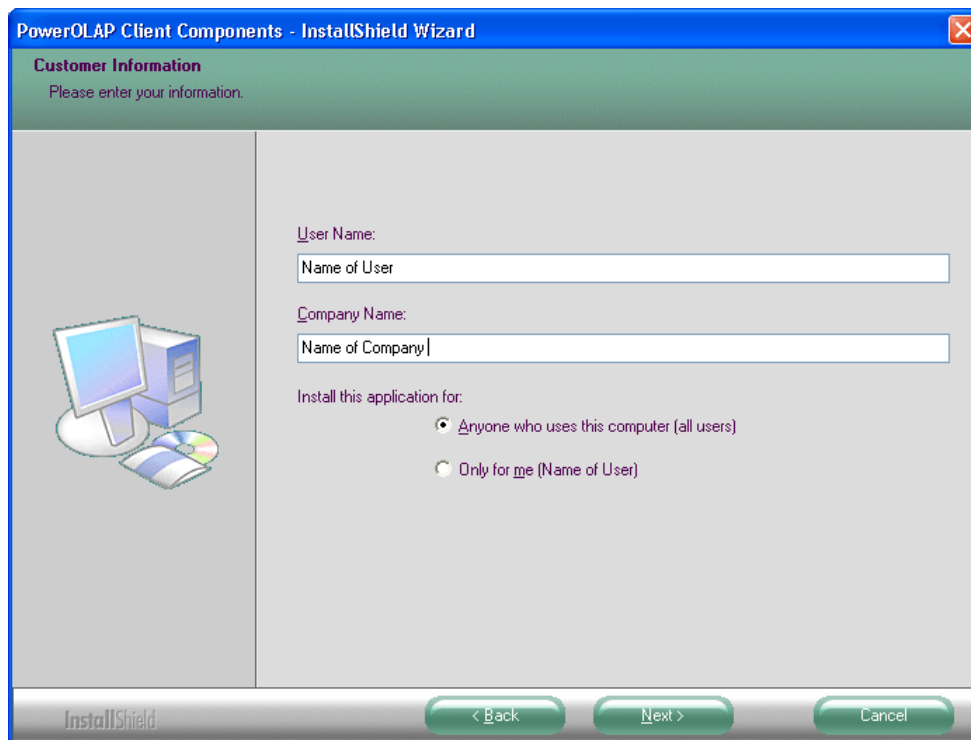
- ▶ Read the **License** and **Maintenance Agreement** screens and **I accept**.



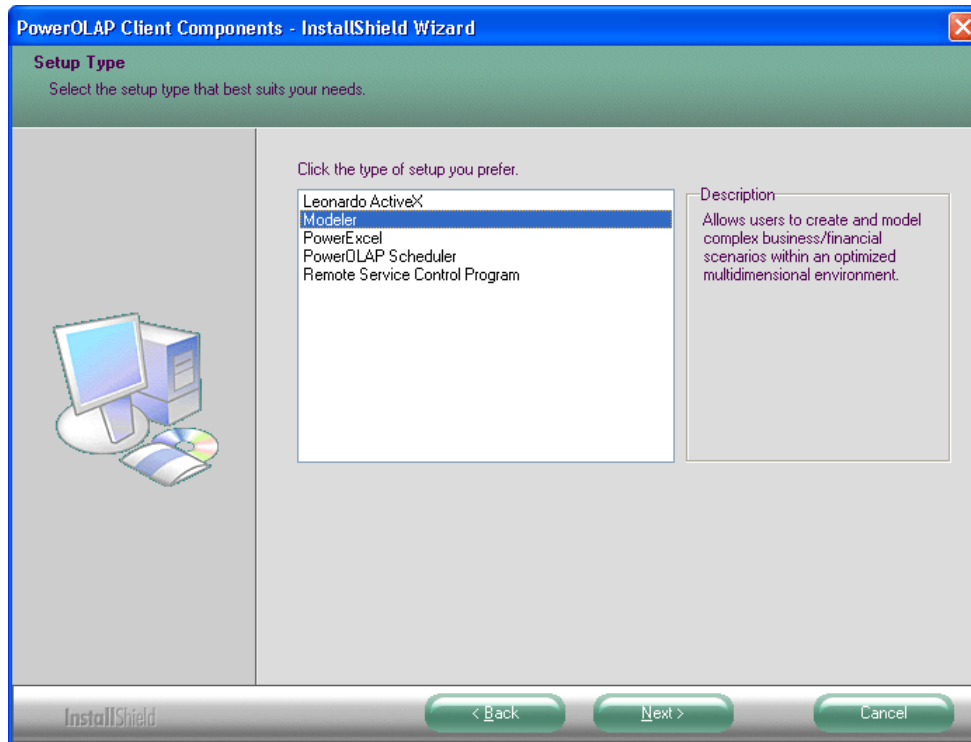


▶ Click **Next**.

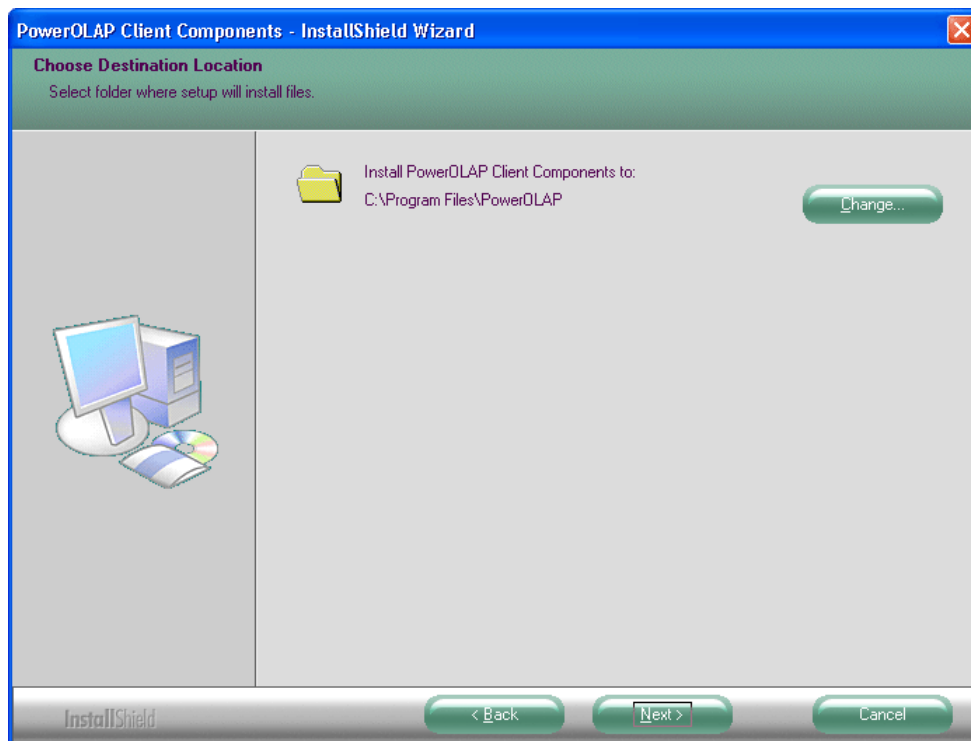
▶ Enter the appropriate **User Name** and **Company Name** in the indicated boxes; note the radio button options.



▶ Click **Next**.

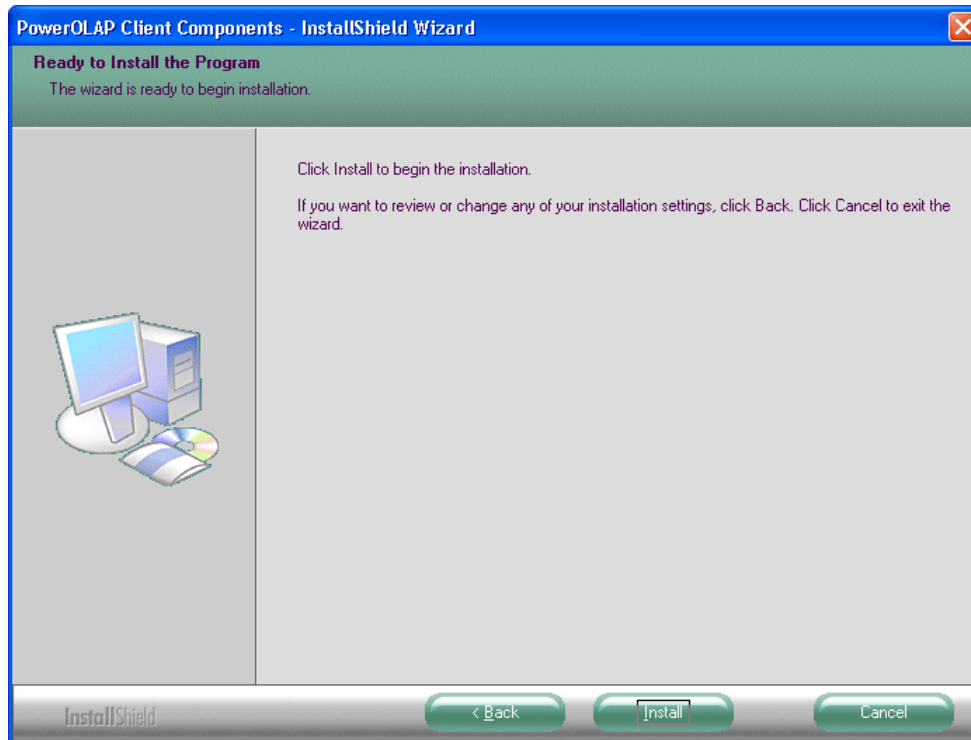


- ▶ Select **Modeler**, required for evaluation, then click **Next**.

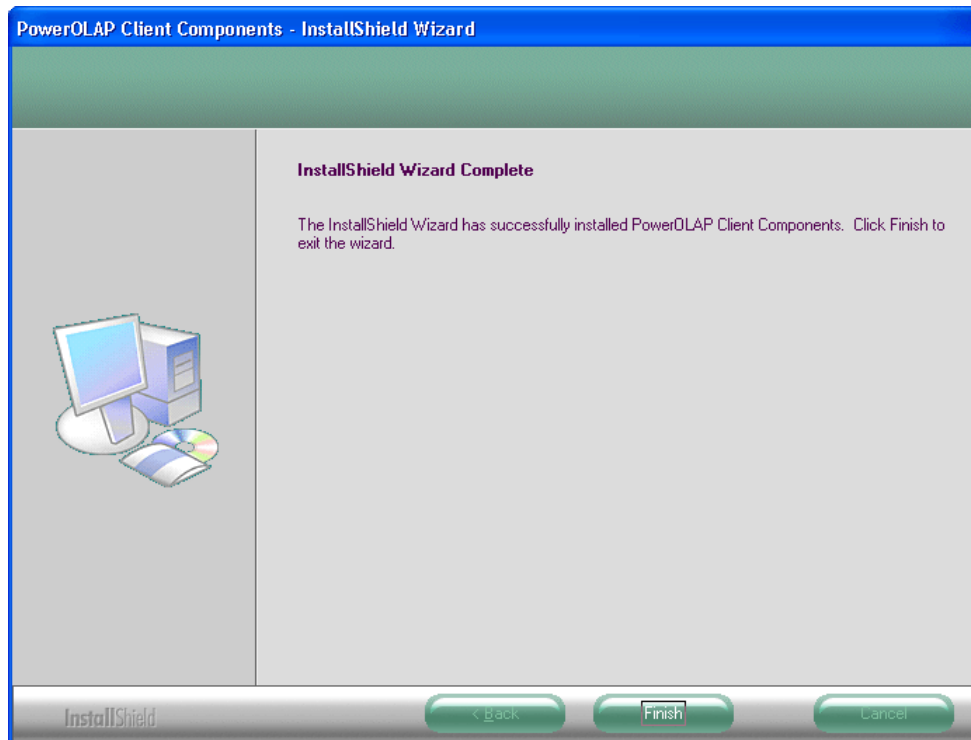


The **Choose Destination Location** screen specifies where the PowerOLAP® Client components will be installed. The default destination folder is *C:\Program Files\PowerOLAP*. You may change the location by clicking on the Change button and then specifying a new path. Otherwise, simply click on the Next button to proceed to next screen.

- ▶ Click **Next**.



- ▶ Click **Install** to begin Installation process.



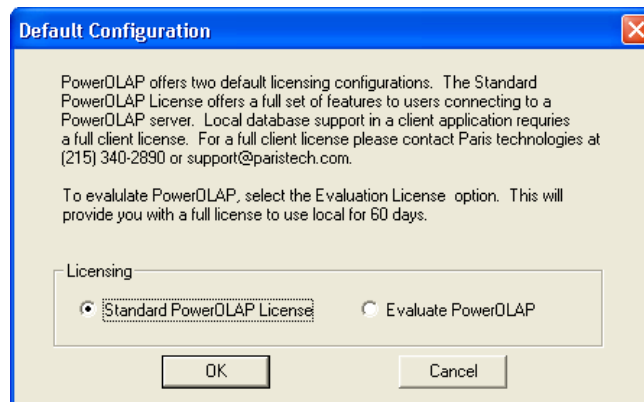
- ▶ Click **Finish** to complete installation.

- ▶ Restart the computer.

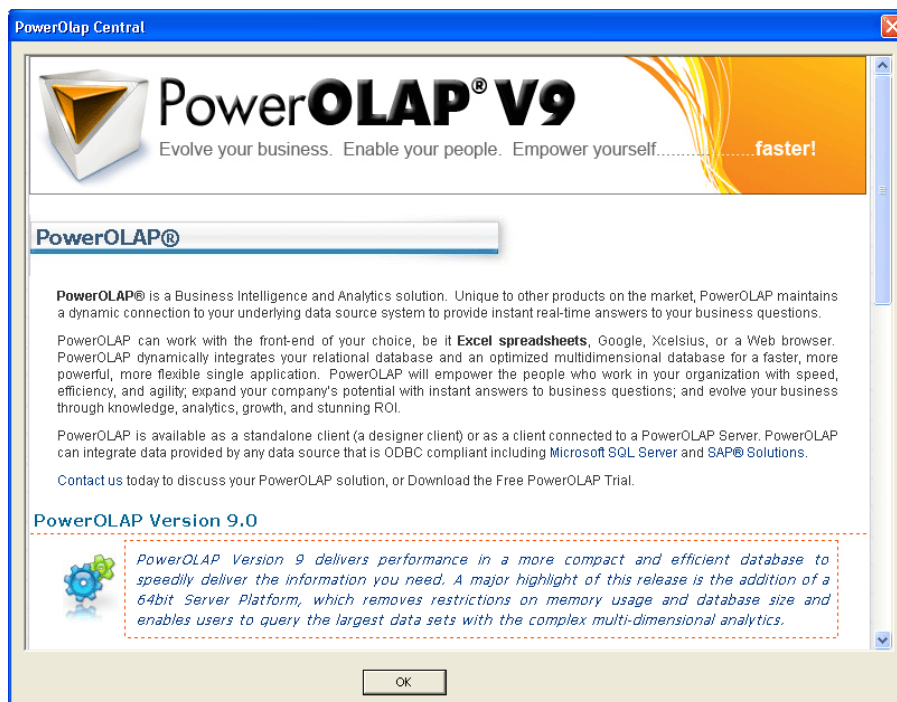
This completes the Installation. Next step is to register the evaluation.

Register the PowerOLAP® Evaluation Client

- ▶ Launch **PowerOLAP®** application. The **Default Configuration** dialog box will be displayed. The first time you launch PowerOLAP® you will be given two options: Standard and Evaluation.

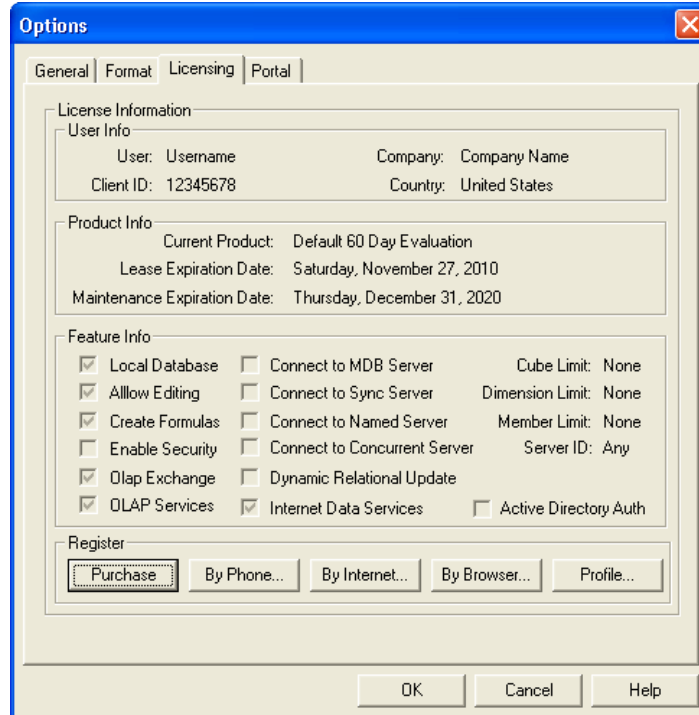


- ▶ Under the **Licensing** section, select **Evaluate PowerOLAP®** option. The Evaluation option will enable a user to operate PowerOLAP® with full functionality for 60 days.
- ▶ Click **OK**. This will display the **PowerOLAP® Central** window.



- ▶ Click **OK**.

This will launch the PowerOLAP® modeler. If you go to **Edit, Options** then select the **Licensing** tab, you will see some information about your installation. Note that the lease expire date is 60 days from the time of your registration.



(This page has been left blank intentionally)